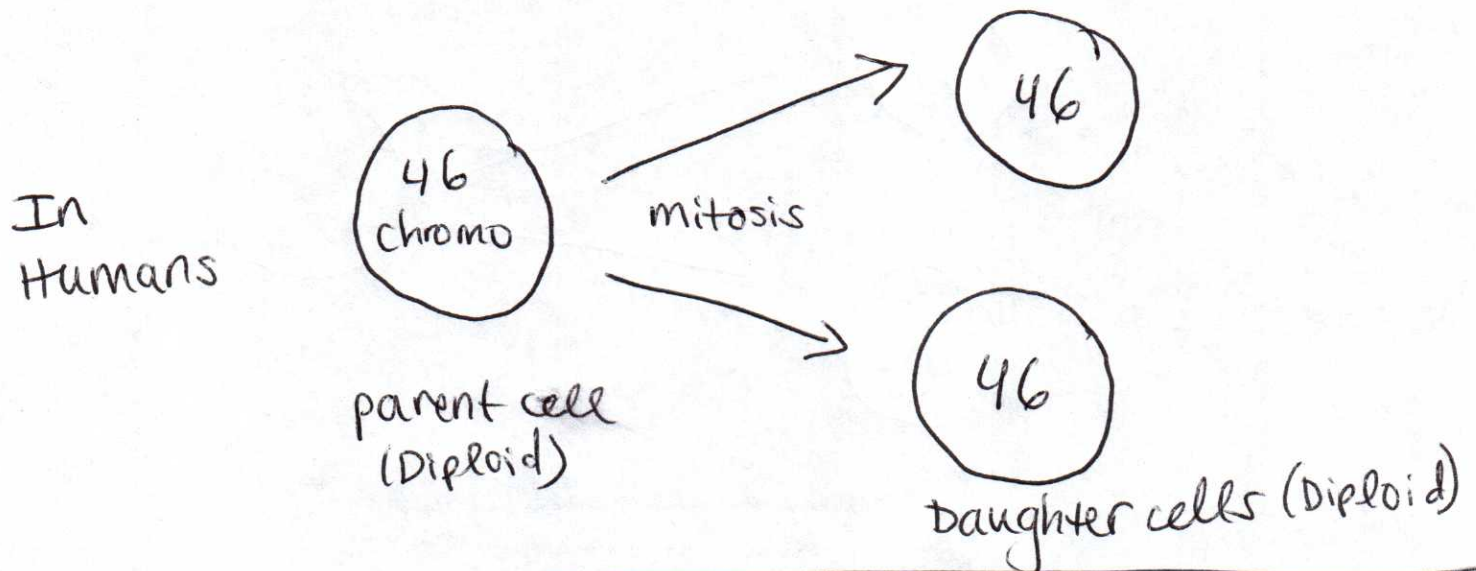
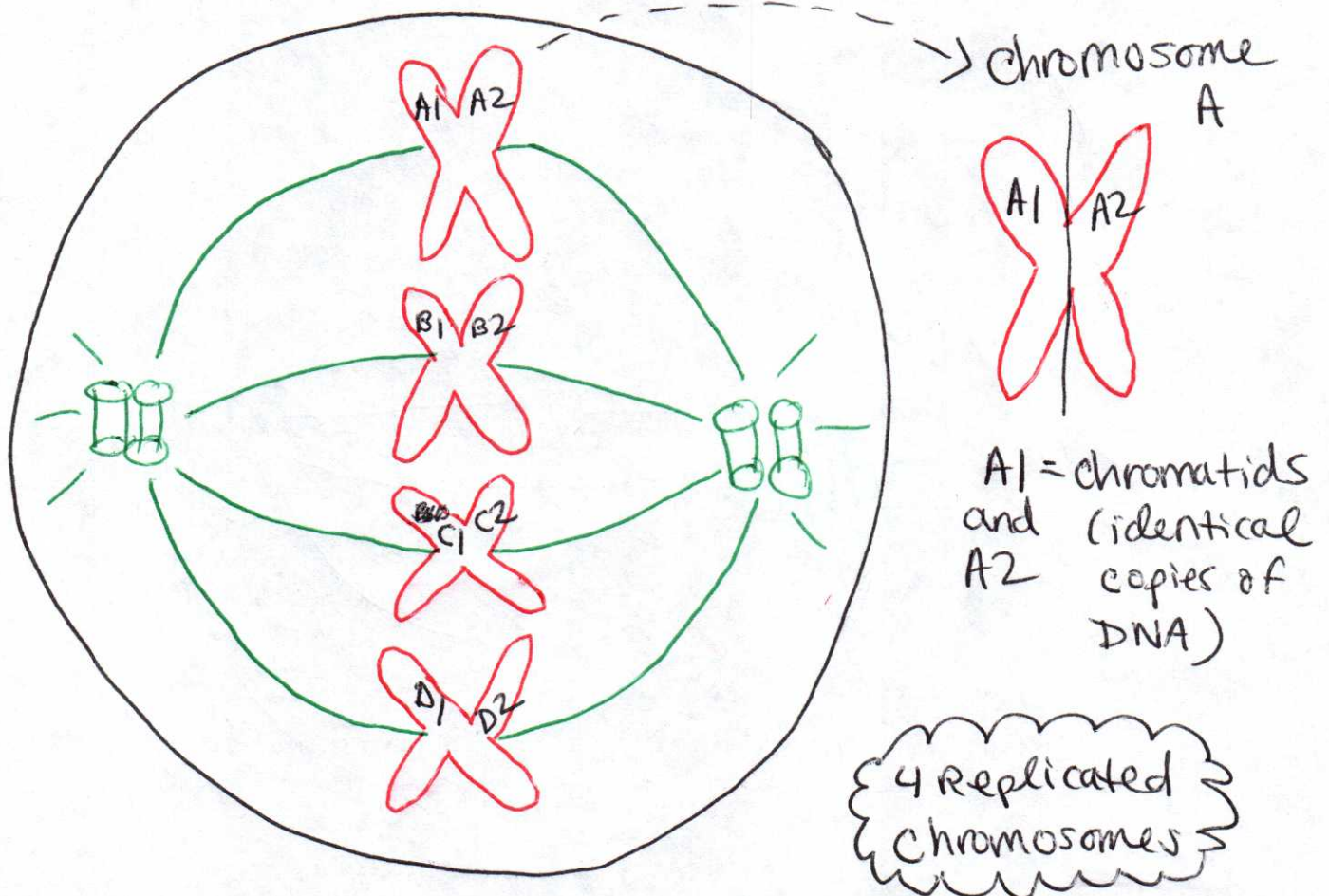


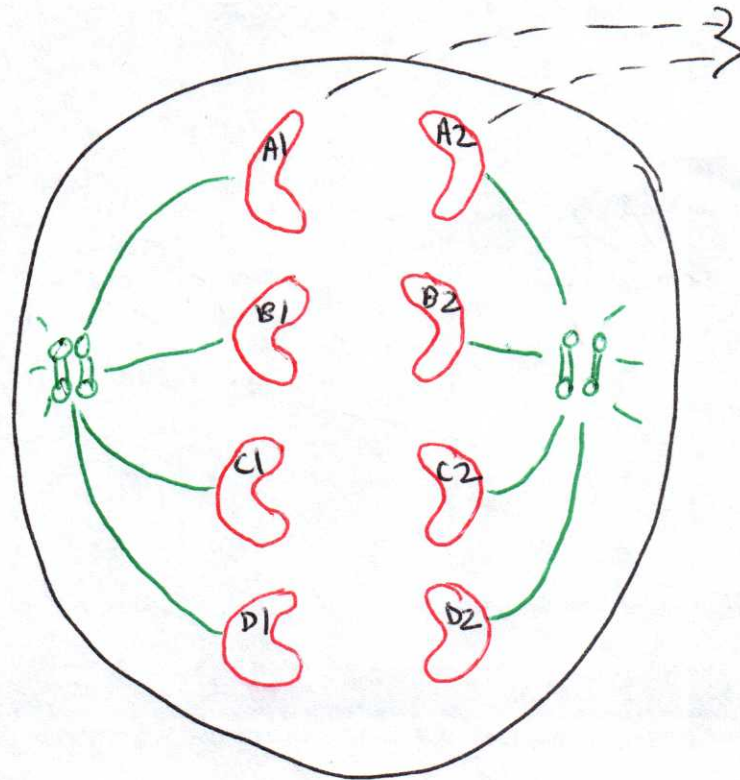
Mitosis - Making New cells with the same # of chromosomes as the parent cell



Metaphase in parent cell (if the parent cell has 4 chromosomes)



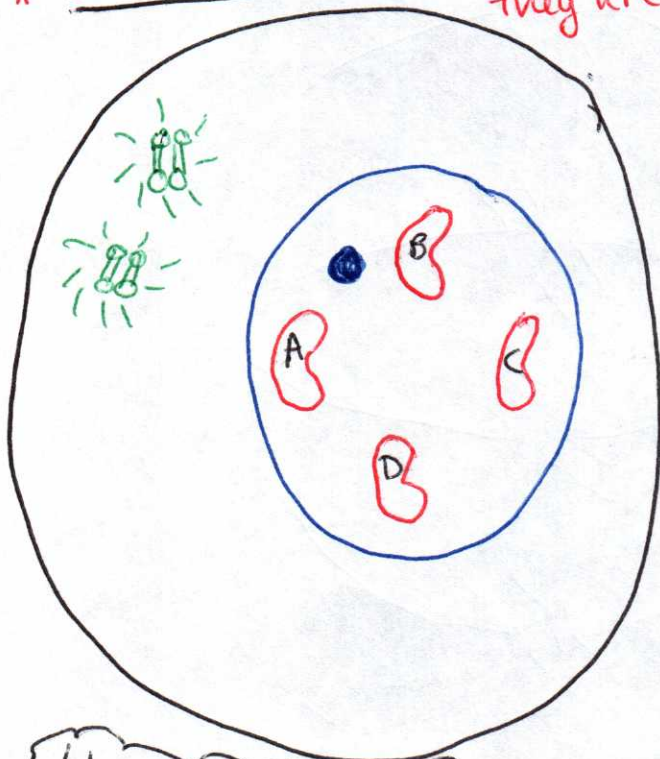
# Anaphase in parent cell



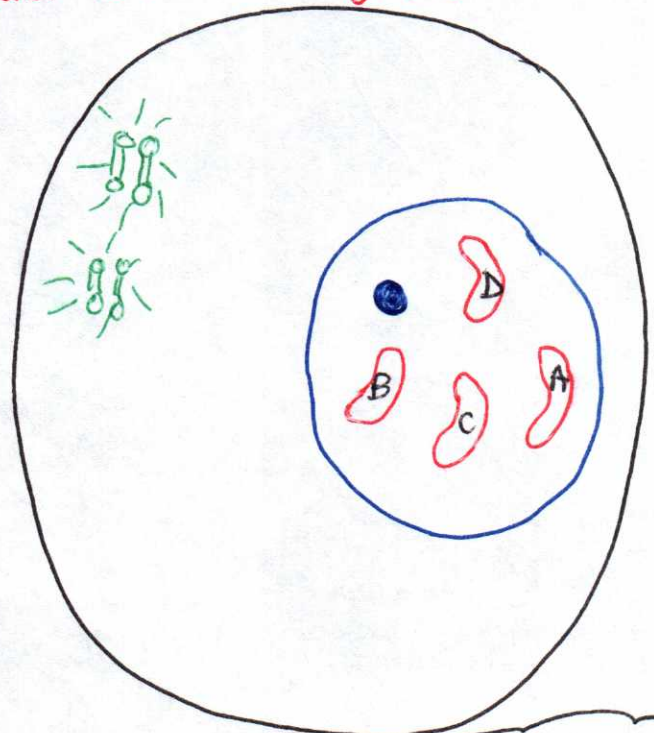
A1 A2  
= Each considered full daughter chromosomes

## Daughter cells in G1 of Interphase

\* Chromosomes would be uncoiled as chromatin at this point, but they are easier to see this way! \*



4 unreplicated chromosomes

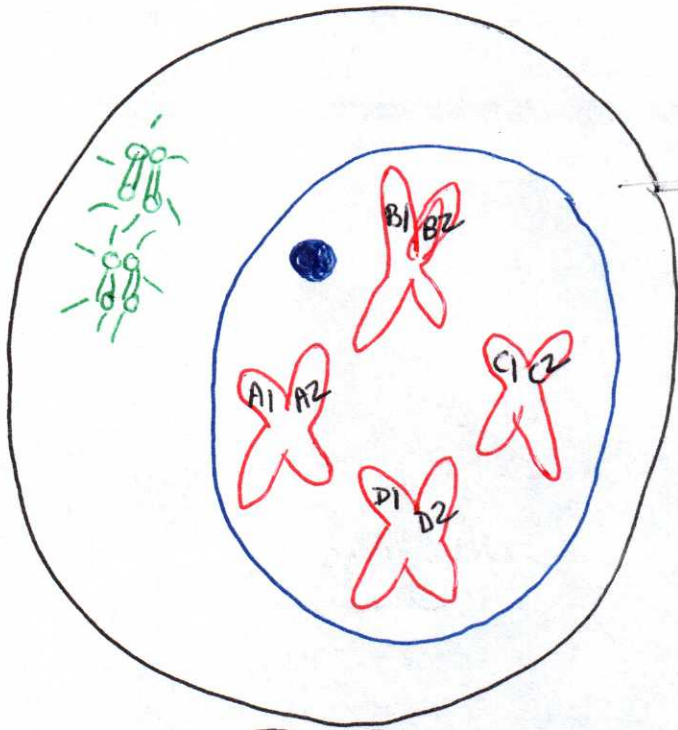


4 unreplicated chromosomes

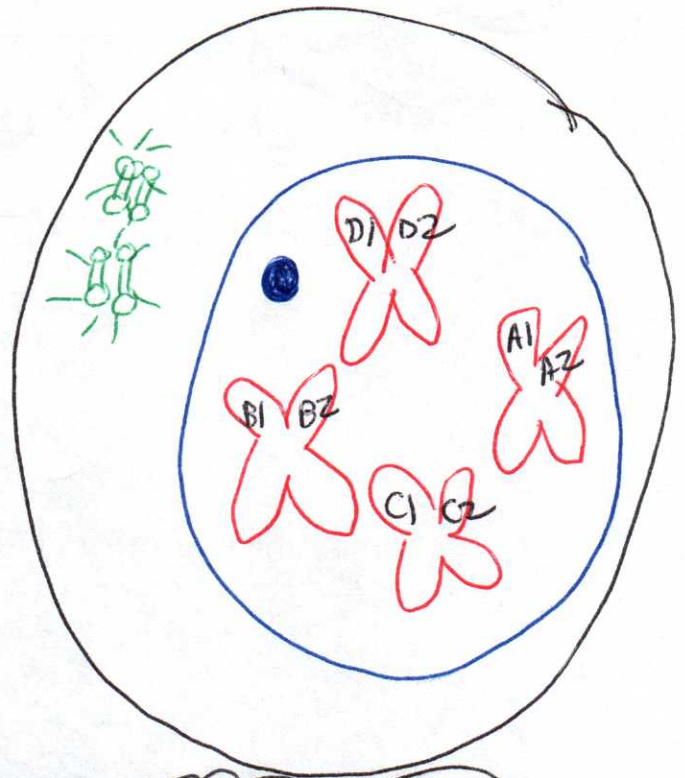


## Daughter cells in S of Interphase

\* chromosomes would be uncoiled as chromatin at this point, but they are easier to see this way! \*



4 Replicated chromosomes



4 Replicated chromosomes

Remember, "S" means synthesis. In this stage of Interphase we are synthesizing a copy of our chromosomes. In other words, we are replicating them so they now have two chromatids.